
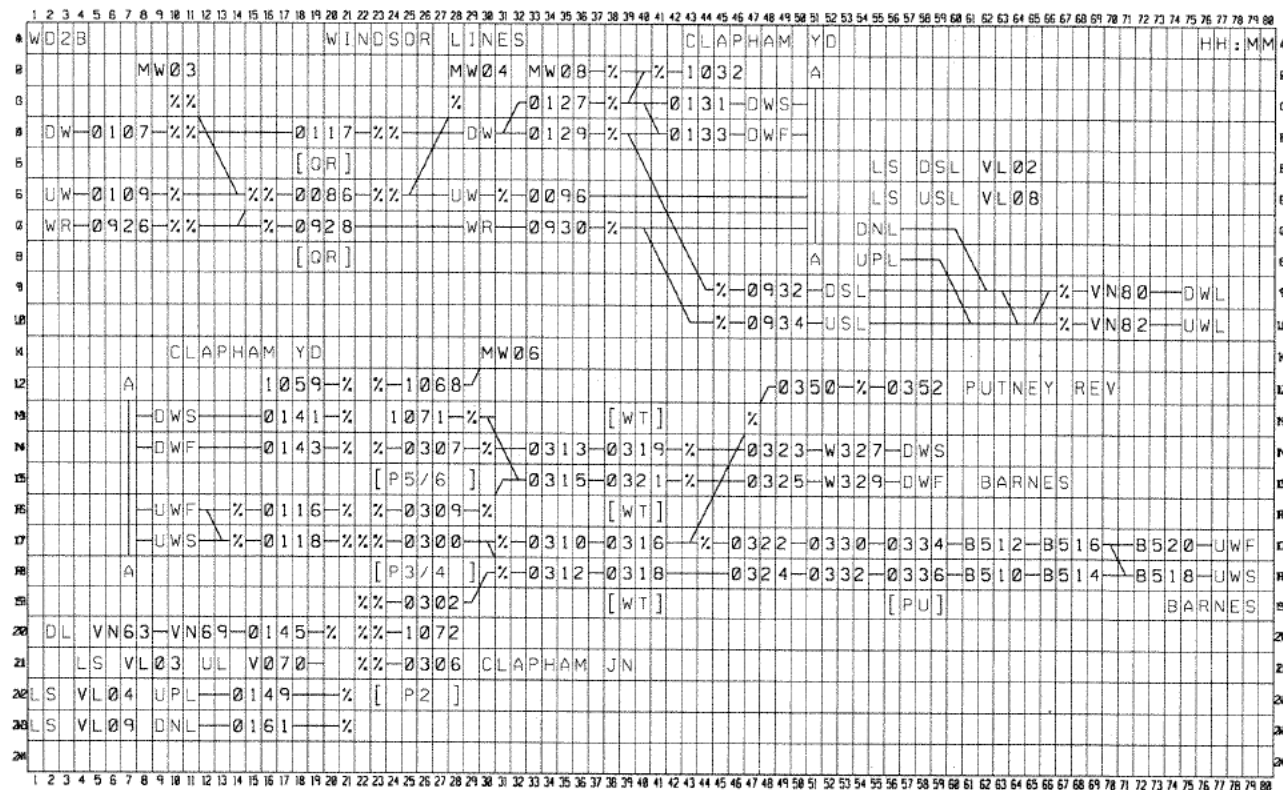


SOURCE DOCUMENT UPDATED		 ABB Signal Ltd Plymouth, England	REV	DATE	CHK	DATE	APR	DATE	ISSUE/REVISION DETAILS		Drq. No.	STD-	RAILTRACK		SOUTH WEST	
VERSION	PROD	CHECK									Produced	10/1/99	WIMBLEDON TD		RAILTRACK MAJOR PROJECTS DIVISION SOUTHERN GROUP LONDON	
J											Checked	10/1/99	MAP TITLE WD2A (MAP No.2)		Sht. No. 3/2	
K											Scale		LOCATION SIGNALMANS AREA 2		Version A02	
L											Issued					
A02																



# NOTES

- 1) All text shown in weight 1 is dynamic eg. 0032.
- 2) Route set characters shown thus X are also dynamic.
- 3) All text shown in weight 0 is static eg. DN
- 4) Track symbols are all static unless specified otherwise.
- 5) Platform ends are text square brackets, but treated as track symbols.

ISSUE B 05.02.07 ISSUE H 07.01.09  
ISSUE C 11.06.07 ISSUE I 10.04.09  
ISSUE D 10.06.08 ISSUE J 11.04.09  
ISSUE E 20.01.00 ISSUE K 14.01.01  
ISSUE F 00.01.01 ISSUE L 22.08.01  
ISSUE G 31.07.04 ISSUE M 11.03.11

DATED

NETWORK RECORDS GROUP

WIMBLEDON

TRAIN DESCRIBER

MAP TITLE

WD2B (MAP NO 3)

LOCATION SIGNALMANS AREA 2

DRAWING NO

5TD-3/3

LAST FULL DATE

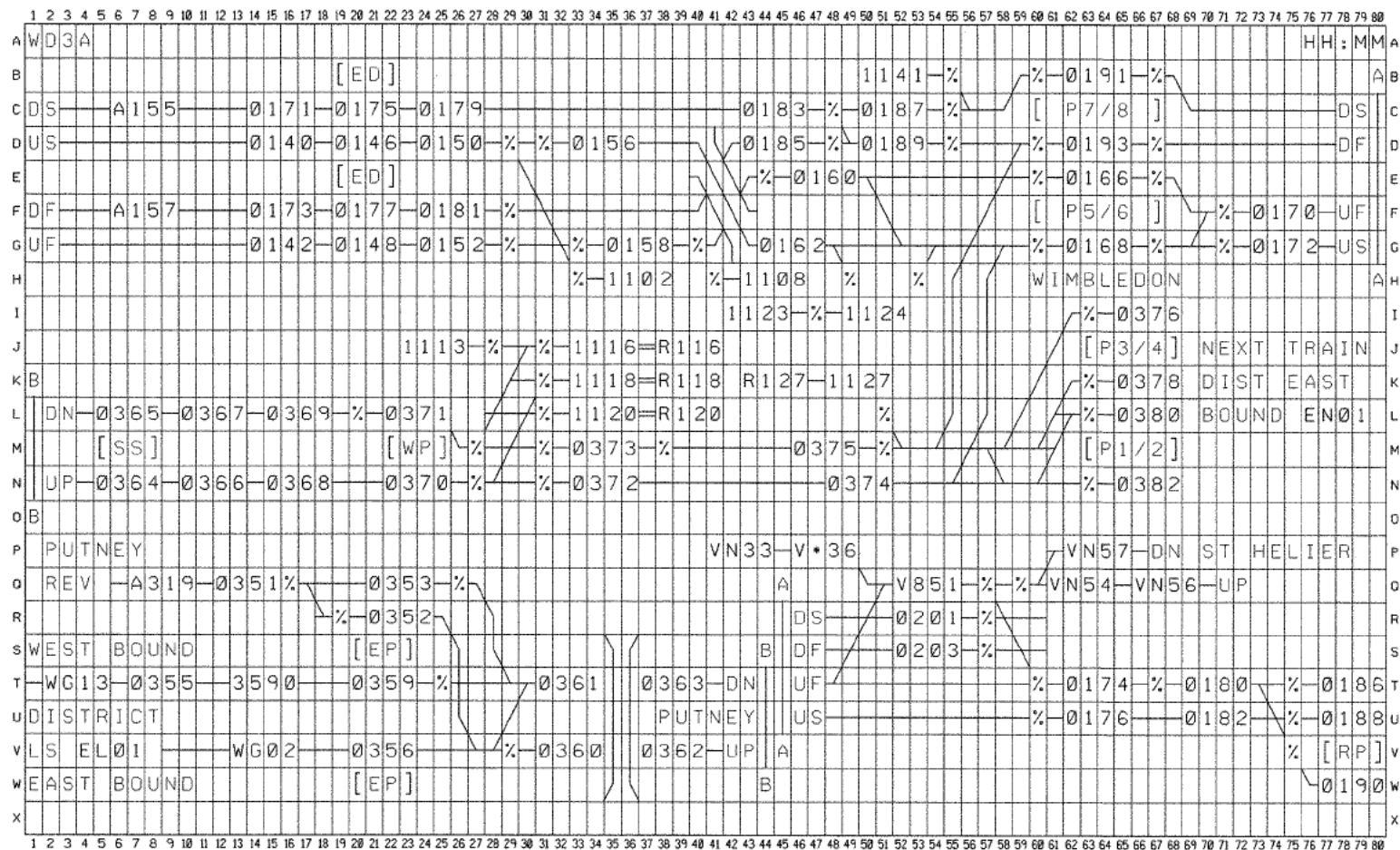
CORRELATION

CURRENT

P01

CAD GENERATED - ALTERATIONS TO BE MADE ON DESIGN FILE ONLY

CAD - 03



ISSUE B 11.02.87 ISSUE H 31.07.89  
 ISSUE C 26.06.87 ISSUE J 07.09.89  
 ISSUE D 11.06.87  
 ISSUE E 22.01.88  
 ISSUE F 13.02.88  
 ISSUE G 20.09.88

Org. No.

Produced

Checked

Scale

Issued

Director of S & T Engineering

WIMBLEDON TD.

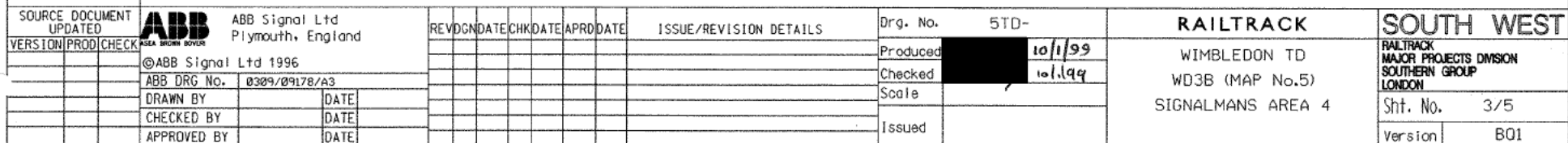
WD3A (MAP No 4)  
 WIMBLEDON AREA

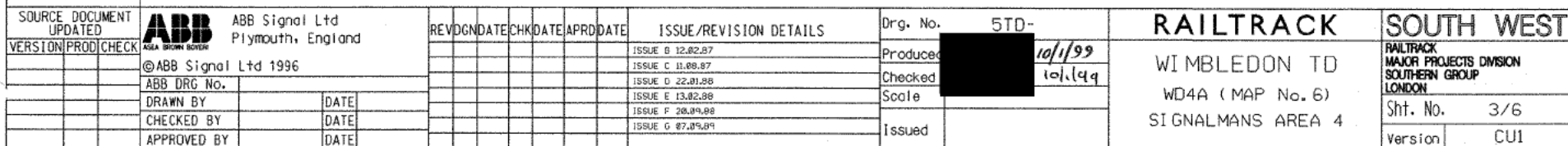
British Rail

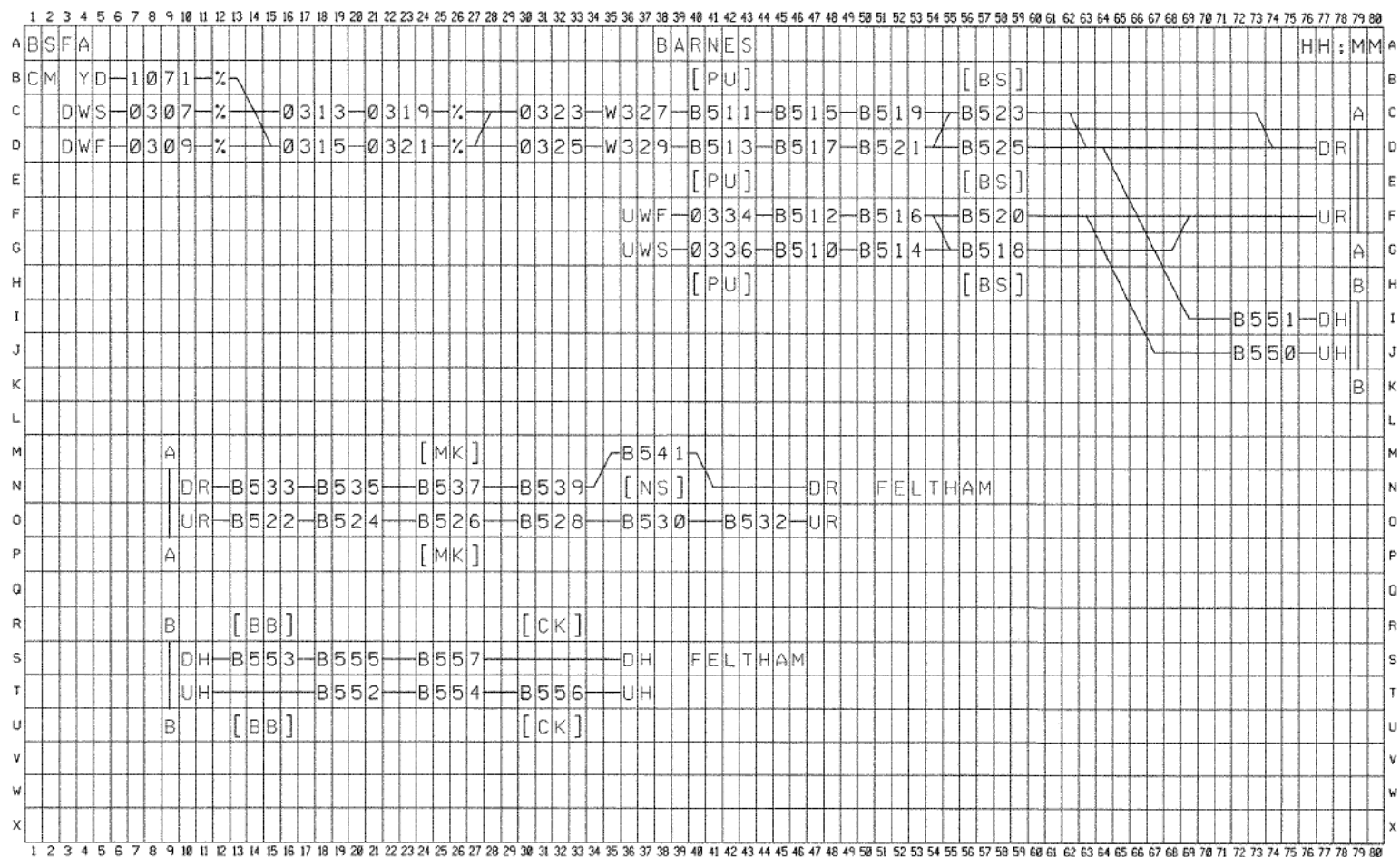
Signal Engineer (Works)  
 Croydon

Sht. No. 5TD-3/4

J

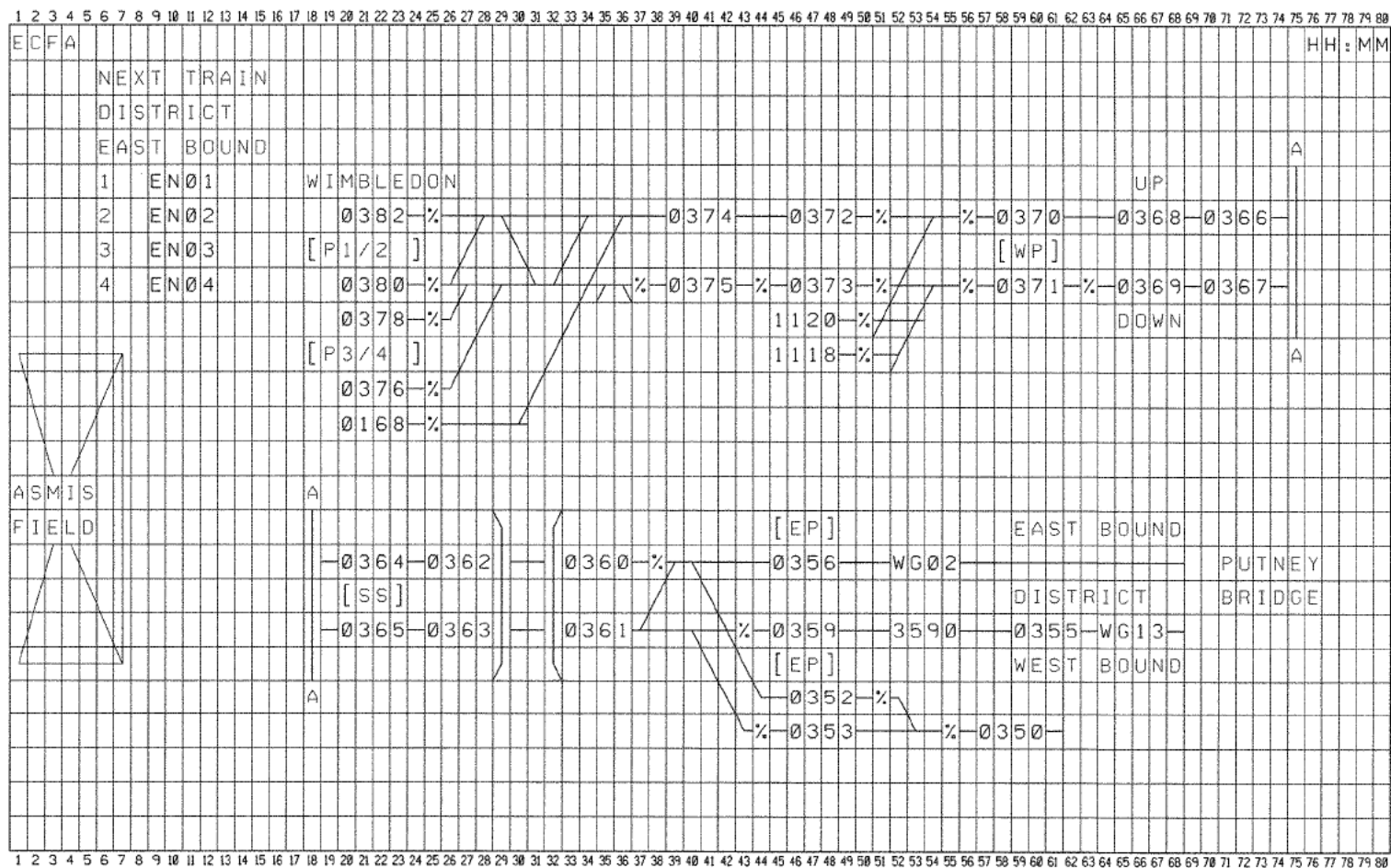






SOURCE DOCUMENT UPDATED		<b>ABB</b> ABB Signal Ltd Plymouth, England		REV	DATE	CHK	DATE	APR	DATE	ISSUE/REVISION DETAILS		Drg. No.	5TD-		<b>RAILTRACK</b>		<b>SOUTH WEST</b>		
VERSION		PROD/CHECK								ISSUE B 13.02.87		ISSUE H 07.09.89		Produced		10/1/99		WIMBLEDON TD	
AWI		©ABB Signal Ltd 1996								ISSUE C 11.08.87				Checked		10.1.99		BSFA (MAP No.7)	
		ABB DRG No.								ISSUE D 15.02.88				Scale				BARNES FRINGE AREA	
		DRAWN BY		DATE						ISSUE E 08.06.88				Issued				Sht. No. 3/7	
		CHECKED BY		DATE						ISSUE F 20.09.88								Version	
		APPROVED BY		DATE						ISSUE G 31.07.89								AWI	





ISSUE B 13.05.86  
ISSUE C 26.06.87  
ISSUE D 11.06.87  
ISSUE E 18.06.88  
ISSUE F 20.09.88  
ISSUE G 31.07.89  
ISSUE H 07.09.89

Activity	Initial	Date	Remarks	Drg. No.
Equip't type/profile				Producer
Wire count				Checked
Continuity test				Scale
Strap and function				Issued
Cable cores				
External equip't				
Timers set & sealed				

Director of S & T Engineering

WIMBLEDON TD.

ECFA (MAP No 8)

EARLS COURT FRINGE

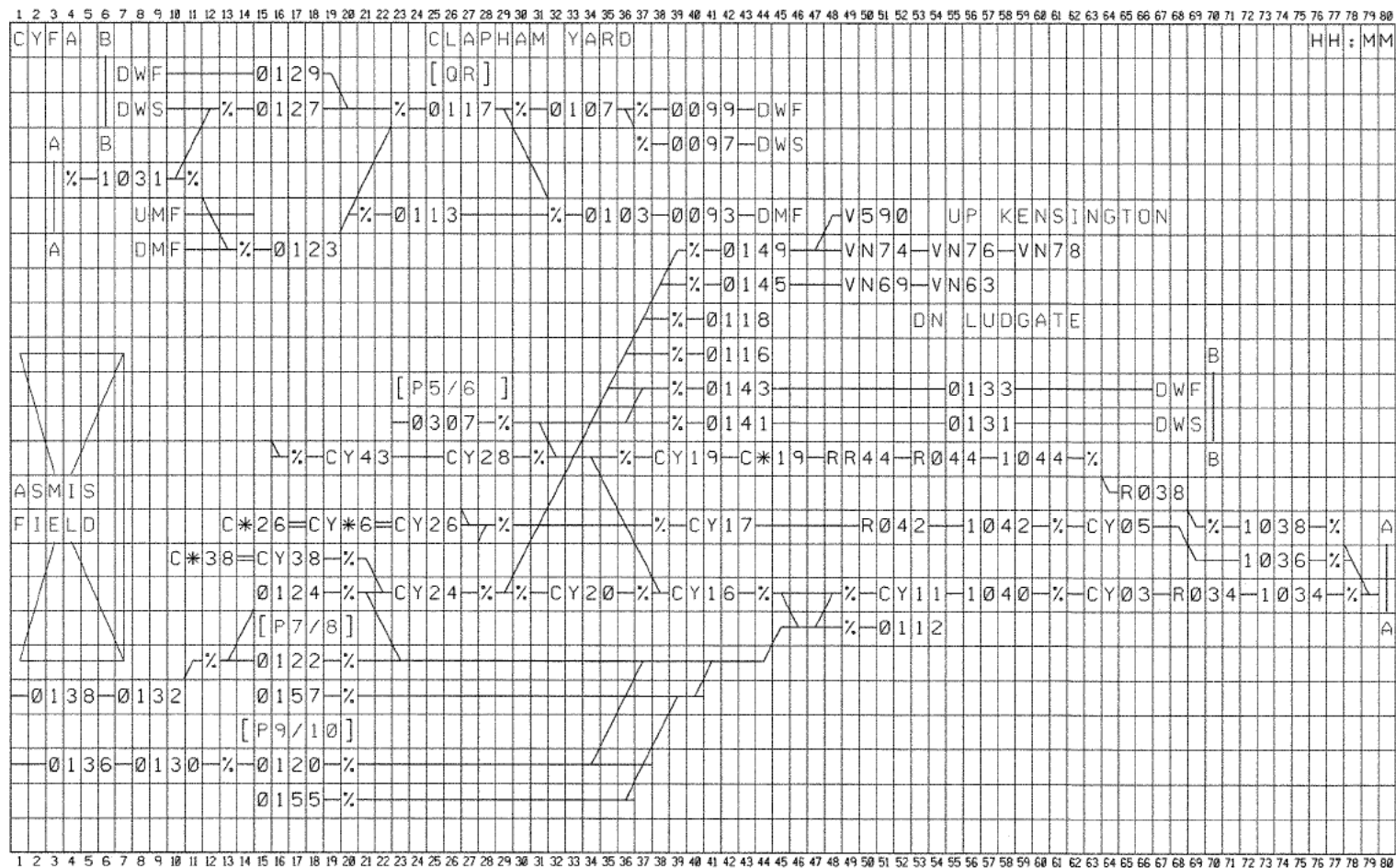
British Rail

Signal Engineer (Works)  
Croydon

Sht. No. 5TD-3/8

H





ISSUE B 10.02.87  
 ISSUE C 11.08.87  
 ISSUE D 16.02.88  
 ISSUE E 08.06.88  
 ISSUE F 20.09.88  
 ISSUE G 08.09.89

Drg. No.

Produced

Checked

Scale

Issued

Director of S & T Engineering

WIMBLEDON TD.

CYFA (MAP No 10)

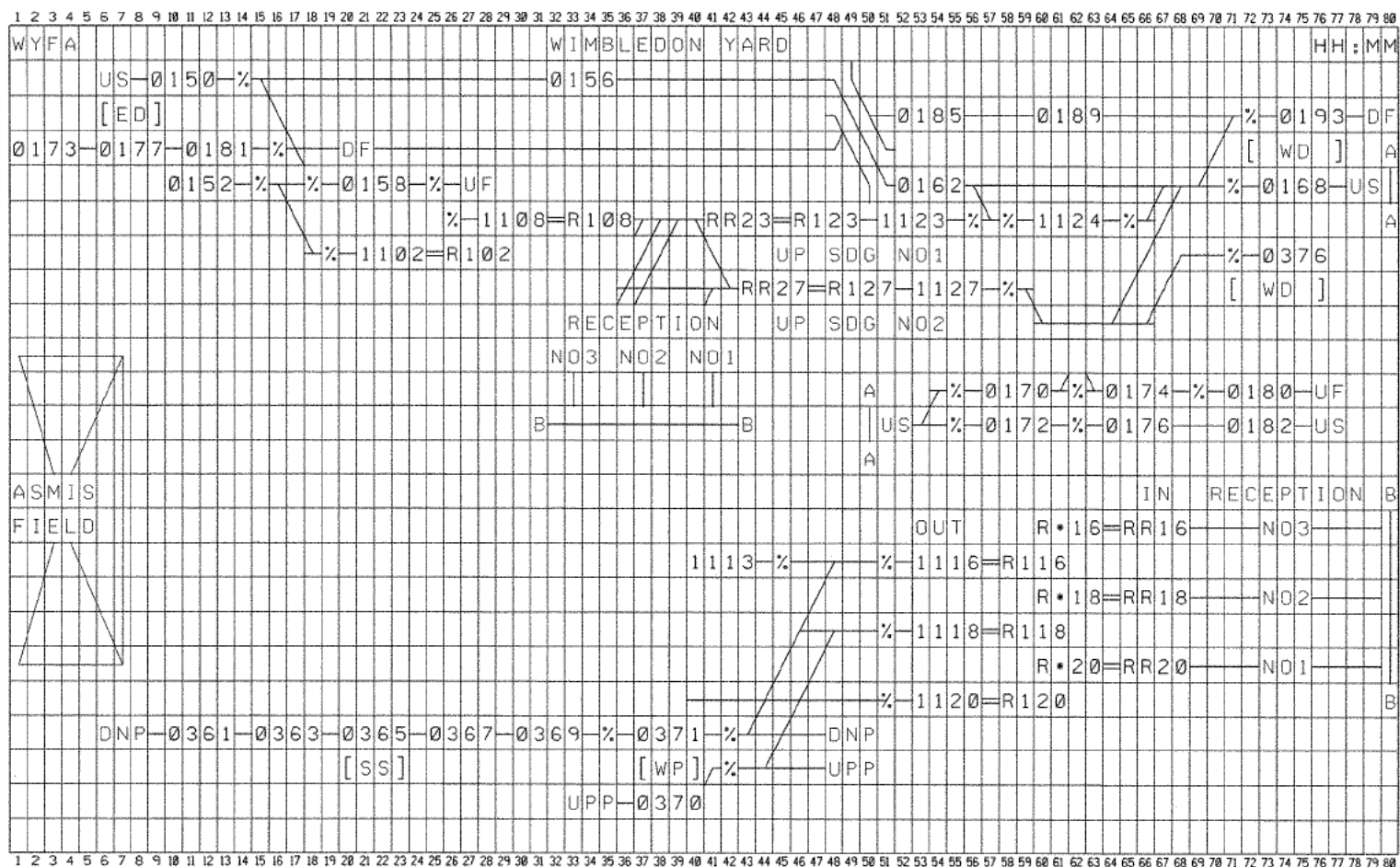
CLAPHAM YARD FRINGE.

British Rail

Signal Engineer (Works)  
 Croydon

Sht. No. 5TD-3/10

G



ISSUE B 16.02.87 ISSUE H 08.01.89  
ISSUE C 26.06.87 ISSUE J 08.09.89  
ISSUE D 13.08.87  
ISSUE E 04.02.88  
ISSUE F 13.02.88  
ISSUE G 28.09.88

Activity	Initial	Date	Remarks	Drq. No.
Equip't type/profile				Produced
Wire count				Checked
Continuity test				Scale
Strap and function				Issued
Cable cores				
External equip't				
Timers set & sealed				

10/1/99  
10/1/99

Director of S & T Engineering

WIMBLEDON TD.

WYFA (MAP No 11)

WIMBLEDON YARD FRINGE

British Rail

Signal Engineer (Works)  
Croydon

Sht. No. 5TD-3/11

J